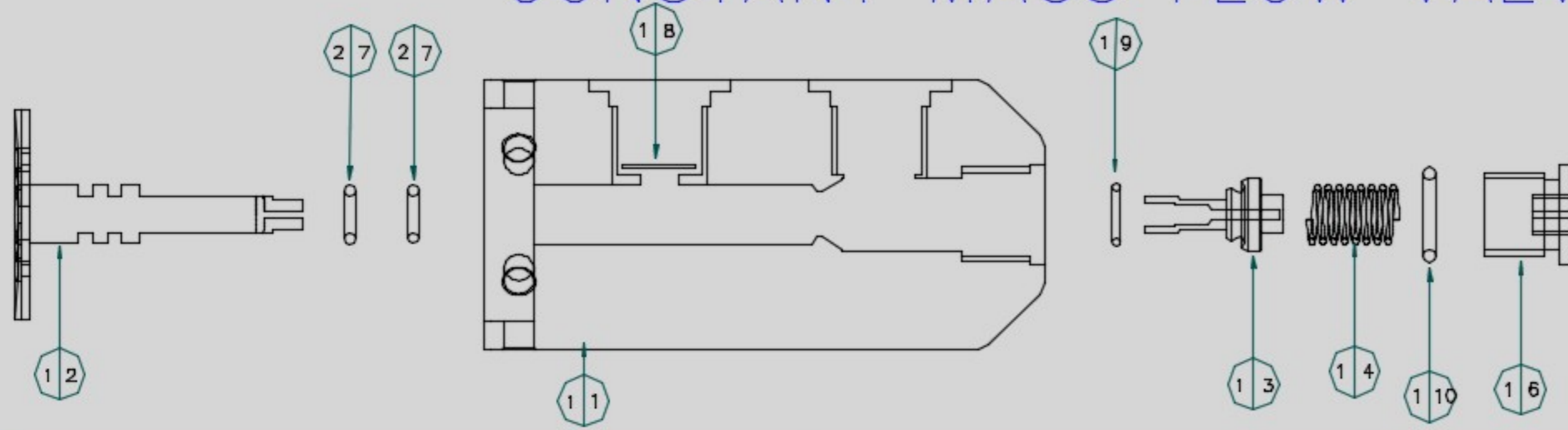


# HYDROGOM RESPIRATORY EQUIPMENT CONSTANT MASS FLOW VALVE



Technical specifications  
cmf valve

Item	Document Number	Title	Material	Quantity	Comments
1	VALVE BODY	CMF Valve	STAINLESS 1.4401	1	
2	PUSHBUTTON	CMF Valve	STAINLESS 1.4401	1	
3	ORIFICE ENDCAP	CMF Valve	STAINLESS 1.4401	1	MAX 2 Nm
4	SPRING	CMF Valve	STAINLESS 1.4401	1	
5					
6	PLUG 7/16	CMF Valve	Brasse/chrome	1	
7	X-RING	PUSHBUTTON	EPDM (70)	2	4.47 x 1.78
8	FILTER	CMF Valve		1	
9	O-RING	ORIFICE ENDCAP	EPDM (90)	1	5.0 x 1.2
10	O-RING	PLUG 7/16	EPDM (70)	1	7.65 x 1.78

Dimensions L x B	75 x 36 MM
Total weight	490 gram
Input pressure p1	13.8 –14.8 Bar
Outlet pressure p2	enviromental pressure
temperture calculation	15 degrees celcius
Flow through orifice	0.70–0.79 Ltrs O2/minute
Flow constant	0 – 75 meters
Flow drop	75 – 132 meters
Flow stop	132 meters
Orifice LEE value	70.000 Lohms +/- 5%